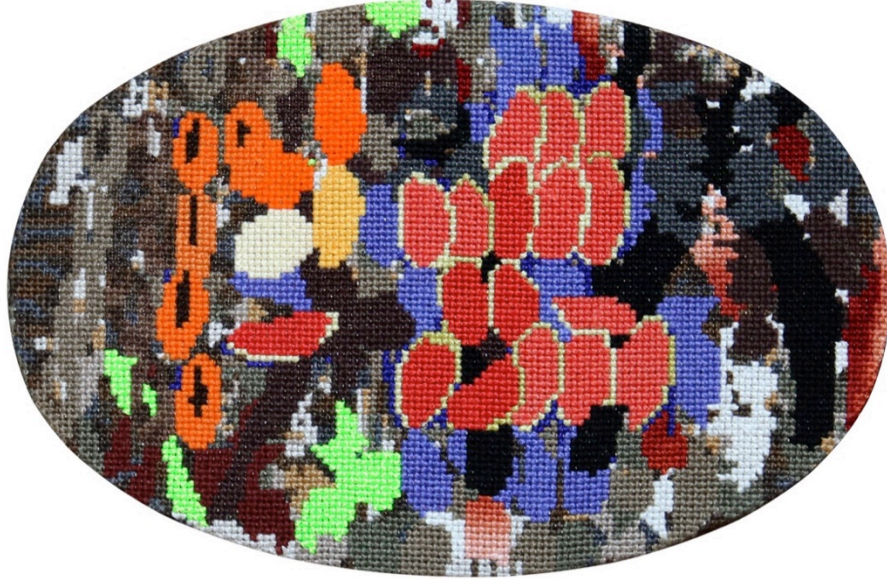


Press Release

The Lie of the Land: Imagined

Ng Joon Kiat | Donna Ong | Darren Soh | Jodi Tan | Wyn-Lyn Tan



Jodi Tan, *Sense of Order #019*, 2022, Cotton floss thread on Aida cloth, H21 x W31.5 cm

Exhibition Period	23 September – 28 October 2023
Opening Reception	Saturday, 23 September 2023, 4 – 7 pm Registration essential. RSVP with info@fostgallery.com

About the Exhibition

FOST Gallery is delighted to present a special edition of the annual group show, *The Lie of the Land*, in conjunction with Singapore's National Day. As with past editions, the artworks are inspired by the urban and natural landscapes of Singapore. However, there will be two parts to the exhibition this year, *Real* and *Imagined*, each part will feature five artists working across different mediums. The second part, *Imagined*, focuses on abstract works inspired by topography and elements of the physical landscape, as well as works of illusory and non-existent scenes, will include works by Ng Joon Kiat, Donna Ong, Darren Soh, Jodi Tan, Wyn-Lyn Tan.

Ng Joon Kiat's impasto painting of the Singapore map incorporated red strings questions the electoral borders; Donna Ong's perfectly lush tropical waterfall scene belies the digital manipulation in its composition. Similarly Darren Soh's night photographs of public housing playgrounds built in the 1970s, do not exist as captured in these photographs. Jodi Tan's laborious cross-stitched colour-block 'paintings' reference banal everyday scenes she encounters. Wyn-Lyn Tan's abstract painting was inspired by the textures and tones of rocks while exploring the local forests.

About the Artists

Ng Joon Kiat (b. 1976, Singapore) is a painter who works with the material language of paint as thought and conceptual processes. He develops art researches from archives of disciplines such as geography, microscopic science, history, cartography, surgical history and city-planning to interrogate for a painting practice.

His institutional solo exhibitions in Singapore include the Nanyang Technological University (2019), Esplanade (2010), National Museum of Singapore (2017). His works has been selected to represent Singapore at the Singapore Embassy in Berlin during the 8 Asia-Pacific Weeks. In 2013, he was commissioned to make a work for the Singapore Biennale 2013. He was invited to exhibit at Louis Vuitton Island Maison in Singapore. In 2014, he was invited to exhibit at 2014 Busan Biennale special exhibition in South Korea.

Ng's works are in major private, public and corporate collections.

Donna Ong (b. 1978, Singapore) is an installation artist from Singapore, best known for her evocative and thought-provoking environments made from furniture, found objects and original artwork. She has exhibited at the inaugural Singapore Biennale (2007), Jakarta Biennale (2009), Kuandu Biennale (2008), 2- Moscow Biennale (2007), Moscow Biennale of Young Art (2014), Thailand Biennale (2018), 9- Asia Pacific Triennial of Contemporary Art (Australia). Her multi-part installation *Every World*, commissioned for the Children's Biennale at the National Gallery Singapore (2019) travelled to the Groninger Museum, Netherlands for the inaugural Kinderbiennale.

Her installations have appeared in museums and institutions worldwide, such as the Singapore Art Museum, National Museum of Singapore, Hara Museum (Japan) and the Djanogly Art Gallery in Nottingham University (UK). In 2009, she received the Singapore National Arts Council Young Artist Award. In the same year, she also won the People's Choice award for the President's Young Talent Competition. While pursuing her Bachelor's degrees in Fine Art and Architecture at Goldsmith's College (UK) and University College London (UCL) respectively, she was conferred several awards and prizes such as UCL's Singapore Undergraduate Scholarship, the Shell-NAC Undergraduate Scholarship and the Architectural Theory Prize. She completed a Masters degree in Fine Art at Lasalle College (Singapore) where she graduated at the top of her cohort.

She has participated in several prestigious art residencies such as Arts Initiative Tokyo (Japan), Koganecho Bazaar (Yokohama, Japan), Singapore Tyler Print Institute (Singapore), Künstlerhaus Bethanien (Berlin, Germany) and Krinzinger Projekte (Vienna, Austria).

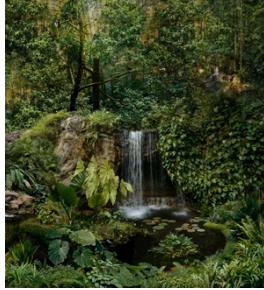
Darren SOH (b. 1976, Singapore) is an award-winning photographer best known for his urban landscape photography, specifically of Singapore's architecture. Soh graduated with a degree in Sociology from the National University of Singapore in 2001 while serving as a contract photographer at the country's leading English broadsheet newspaper, The Straits Times. His Bachelor's thesis was titled *Deconstructing Journalism: Examining the Photographs in the Straits Times*. He decided to pursue exclusively architecture photography and thus has to frequently engage with architects and developers for his commercial work, photographing their developments including notable icons like the National Gallery Singapore. Some of his international architectural clients include Aedas, ARUP, Wilkinson Eyre, Monocle, Travel+Leisure Southeast Asia and Wallpaper* Magazine

In 2019, Soh's image of the Potong Pasir Housing Development Board (HDB) flats was the only entry from Asia that had been picked for Apple's global 'Shot on iPhone' challenge.

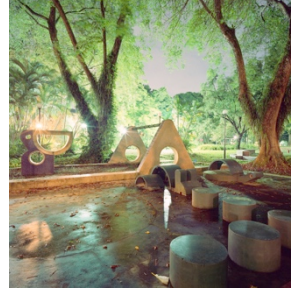
Soh lives and works in Singapore.

Jodi Tan's (b.1990, Singapore) core interest lies in image-making and image-reading. Tan graduated with a BA (Hons) in Fine Arts in 2011, from LASALLE College of the Arts, Singapore. She was awarded The Winston Oh Travel Research Award in the same year. Solo presentations include *Session 7*, Peninsular, Singapore (2019) and *Room*, SPRMRKT, Singapore (2018). Tan has also participated in group exhibitions locally including *Sewing Discord*, Jendela (Visual Arts Space), Esplanade (2021), *The Fabric of Sympathy*, Institute of Contemporary Arts Singapore (2020), *Bloom*, iPreciation (2019), *Re:Generation - Young Singapore Artists Series*, The Fullerton Hotel Singapore (2018), and *UNTAPPED EMERGING*, SHOPHOUSE 5 (2016).

Wyn-Lyn TAN's (b. 1974, Singapore) artistic practice is grounded in painting, and is driven by a visual language shaped through rhythm and intuition. Trained in traditional Chinese ink painting and Western painting, her work has developed a contemporary visual vocabulary that often straddles between East and West. She considers the journey and an immersive experience of a place as a medium, and much of her work has been based on travels to unfamiliar and distant landscapes in the Northern Hemisphere, in a desire to chase the ephemeral. Her affinity with the North ties in with her Chinese sensibilities, as she finds a resonance in the vastness seen in the North, with the elusive concept of emptiness in Chinese landscape paintings. She is also interested in the nature of spaces, both metaphysical and physical, and their evocative power. In recent years, her explorations of form, space, light and perception have led to works that question the dichotomy between the two- and three-dimensional.

Selected Images


Donna Ong
My Paradise Lost
 2020
 Diasec Print
 H67 x W60 cm



Darren Soh
Dover Road Pelican Playground
 2012
 Archival Inkjet Pigment print on Ilford
 Galerie Gold Gloss paper
 H100 x W100 cm

NB: More images can be furnished upon request.

Location

FOST Gallery
 1 Lock Road
 #01-02, Gillman Barracks
 Singapore 108932

MRT

Labrador Park

Bus

Opposite Alexandra Point: 51, 57, 61, 93, 97, 97e, 100, 166, 175, 963 or 963e

Gallery Hours

Tue–Sat: 11am–7pm
 Sun/Mon/Pub Hol: Open by appointment

Admission

Free

Enquiries

Call +65 6694 3080 or e-mail info@fostgallery.com
