

## Press Release

### ***Oscillations: Adventures in Metamodernism***

Grace Tan | Sebastian Mary Tay | Ian Woo

---

<b>Exhibition Period</b>	24 April – 27 June 2021
<b>Opening Reception</b>	Saturday, 24 April 2021, 5 – 7pm*
<b>Artists' Talk</b>	Saturday, 24 April 2021, 4 – 5pm* [Fully Subscribed] * Information on registration below
<b>About the Exhibition</b>	<p><i>Oscillations: Adventures in Metamodernism</i> features works by Grace Tan, Sebastian Mary Tay and Ian Woo. This group exhibition highlights the ideological values of an emerging framework that moves beyond postmodernity and intends to initiate discourses necessary for the metamodern era. The artworks, which include sculptural objects, digital drawings and moving images, are positioned on the axis of polarities.</p>

'Metamodernism' is a newly proposed term to describe the developments of contemporary culture beginning from the early 2000s, driven by the acceleration of technology, information exchange, as well as a reaction to recent global events like climate change, the financial crisis, political instability, and now the pandemic. Cultural theorists Timotheus Vermeulen and Robin van den Akkerby described the movement as an "informed naivety, a pragmatic idealism", oscillating between the opposite spectrums of modernism and postmodernism.

Like a pendulum swinging between multiple poles, the artists have embraced the analogue and digital, formalism and discord and traversing the realms of reality and abstraction in their works. Grace Tan continues her investigation into natural mineral pigments used in East Asian and Western paintings before the advent of synthetic mass produced paints (*n. 326 – carbonation*, 2015; *Tectonics*, 2018; *Prism Objects – Four Square Rods*, 2021). Abstract painter Ian Woo debuts his digital drawings made over the course of a year with an app on his smart phone during pockets of free time outside his studio space (*Snap* series). Sebastian Mary Tay debuts a dream-like video sequence of shimmering mountain peaks, created digitally using polygonal forms. Inserted in the gallery space are his plaster sculptures, seeming sliced from a multi-hued pastel hillock.

Harnessing the rhythm of the metamodern oscillation is critical as to how we can propel into the future.

For enquiries, please contact [info@fostgallery.com](mailto:info@fostgallery.com) or +65 6694 3080.

---

FOST Private Limited  
1 Lock Road  
#01-02, Gillman Barracks  
Singapore 108932

Telephone 65 6694 3080  
E-mail [info@fostgallery.com](mailto:info@fostgallery.com)  
Website [www.fostgallery.com](http://www.fostgallery.com)

/Gallery  
/Education  
/Advisory



---

**About the Artists**

**Grace TAN** (b. 1979, Johor Bahru, Malaysia) began her practice in 2003 under the *kwodrent* series. Influenced by geometry, her works are distinguished by an intrinsic tactile nuance that heightens the matter and form. Tan's new body of works presents various systems of arrangement, exploring the intrinsic relationship between the displayed objects and the display structures.

Tan has been commissioned by the Singapore Art Museum, The Esplanade and the Land Transport Authority of Singapore. She has also represented Singapore at Singapore Biennale 2013, Fukutake House/Setouchi Triennale 2013 (in collaboration with The Substation), Aichi World Expo 2005, Venice Architecture Biennale 2008, London Design Week 2006 and State of Design Melbourne 2008-2010. In 2012, Tan was awarded the distinguished President's Design Award for *Building as a Body* and in 2013, she was conferred the Young Artist Award and nominated for the President's Young Talents Award.

Tan lives and works in Singapore.

---

**Sebastian Mary TAY** (b. 1989, Singapore) is an interdisciplinary artist who graduated from The Glasgow School of Art with Master of Research in Creative Practices and Bachelor of Arts with Honours in Fine Art. Tay is an interdisciplinary artist and educator. He graduated from The Glasgow School of Art with Master of Research and Bachelor of Arts with Honours in Fine Art. In the last five years, Tay's works have been exhibited in the UK, Lithuania, Singapore, Malaysia, and China. Some exhibitions include *Something Above; Somewhere Beyond* at FOST Gallery (solo exhibition, Singapore), *Bus.Stop.Art* (public installation, Singapore), *Sandstorm in an Hourglass* (group exhibition, Singapore), *Utopia* (group exhibition, UK), and The Society of Scottish Artists annual exhibitions. Tay's works showed at The Royal Scottish Academy on multiple occasions; he also received the Royal Glasgow Institute prize and the Royal Scottish Academy Latimer Award. Sebastian recently partook in Facebook Artist in Residence (AIR) programme, where he made a site-specific photographic print measuring twenty-five metres and across three walls.

Various institutions have invited Sebastian for talks and guest lectures in recent years; they include City of Glasgow College (UK), The Royal Scottish Academy (UK), Mount Florida Studios (UK), The University of the West of Scotland (UK), DECK (Singapore), Nanyang Technological University (Singapore), and Nanyang Academy of Fine Arts (Singapore). Tay is currently an adjunct lecturer at Nanyang Academy of Fine Arts, LASALLE College of the Arts, and Nanyang Technological University. His research interests and teaching areas include art history, contextual studies, art theory, contemporary art practice, philosophy, critical theory, photography history, photography theory, photography practice, black and white darkroom photography, alternative processes.

Tay is an elected Professional Member of The Society of Scottish Artists. He lives and works in Singapore.

---

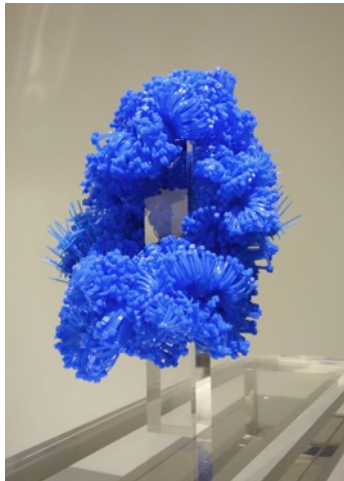
---

**Ian WOO** (b. 1967, Singapore) is an artist influenced by forms of modernism, perceptual abstraction and the sound structures of music improvisation. His paintings, painted objects and drawings are characterised by a sense of gravitational and representational change. Each work often bears signs in which the function of image is seen as a diagrammatic guide towards consciousness. His use of frames, axis and invisible grids as starting points to build upon his work has led to the development of his 'compartments and systems' approach to understanding a painted space as activated time.

Woo's work is in the collection of major collection of major institutions such as ABN AMRO, Singapore Art Museum, The Istana Singapore, National Gallery Singapore, Suzhou Center, UBS and the Mint Museum of Craft & Design, USA. His paintings are featured in the publication *Art Cities of the Future: 21st Century Avant-Gardes*, a publication by Phaidon in 2013. Since 2016, he has been part of *Impermanent Durations: On Painting and Time*, an artist collaborative with Beth Harland, David Thomas and Laura Lisbon.

---

### Selected Images



Grace TAN  
*Dreaming of the Azurite Grove*  
2021  
Assorted blue polyamide cable  
fasteners and tags and clear acrylic  
rod  
H38 x W26 x D26 cm



Sebastian Mary TAY  
*Contemplating on Drifting Clouds* (video still)  
2021  
Edition of 5 + 2 AP  
Single channel HD video, 00:03:33



Ian WOO  
*Snap #15*  
2021  
Archival print on paper  
Edition of 10 + 2 AP  
H29.7 x W18.5 cm

---

<b>Location</b>	FOST Gallery 1 Lock Road #01-02, Gillman Barracks Singapore 108932
<b>MRT</b>	Labrador Park
<b>Bus</b>	Opposite Alexandra Point: 51, 57, 61, 93, 97, 97e, 100, 166, 175, 963 or 963e
<b>Gallery Hours</b>	Tue–Sat: 11am–7pm Sun: 11am–6pm  Mon/Pub Hol: Open by appointment
<b>Admission</b>	Free
<b>Visitor Registration</b>	<a href="http://www.fostgallery.as.me/schedule.php">www.fostgallery.as.me/schedule.php</a>
<b>Enquiries</b>	Call +65 6694 3080 or e-mail <a href="mailto:info@fostgallery.com">info@fostgallery.com</a>

---